



## Knowla WALL User manual



# Table of Contents

|                                     |    |
|-------------------------------------|----|
| What does the set contain?          | 3  |
| Explanation of the device elements  | 3  |
| How to set up the device correctly? | 4  |
| How to turn the device on/off?      | 5  |
| Connecting to wireless internet     | 6  |
| Language selection                  | 7  |
| Knowla start screen                 | 7  |
| Updates                             | 8  |
| Settings                            | 8  |
| License key activation              | 9  |
| Planets                             | 9  |
| Inactive/Active planet              | 10 |
| Balls calibration                   | 11 |
| Starter Planets                     | 14 |
| Methods of interaction              | 14 |
| Application - Knowla Remote         | 14 |
| Sharpness of the displayed image    | 15 |
| Cleaning the device                 | 15 |
| Cleaning the filter                 | 16 |
| Proper use                          | 17 |

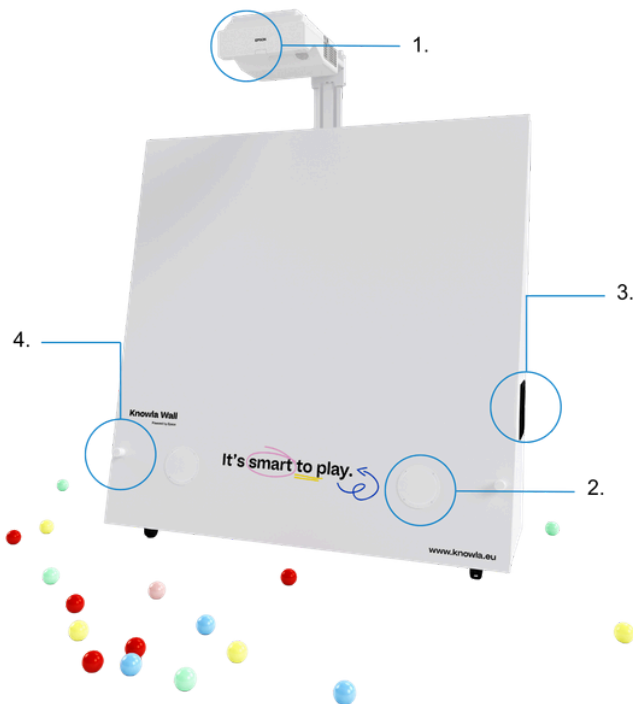


# What does the set contain?

- Knowla Wall with Starter Planets
- Central unit (PC)
- Power cable, XLR cables, and speaker cables
- 40 balls
- Network card (Wi-Fi)
- Ball basket and accessory bag
- Wireless keyboard
- Epson projector remote control
- 2 interactive pens (with spare tips)

## Explanation of the device elements

1. Projector
2. Speakers
3. Handle
4. Ultrasonic sensors



Turn the device on and off using the projector's on/off button. The projector turns the device on and off.

## How to set up the device correctly?

The device should be placed against a wall. There should be no objects in the vicinity of or on the device that could hinder its use, nor should there be any sound-emitting devices such as air hockey tables nearby.

Do not obstruct the projection source, the interactive pen receiver (projector), or the ultrasonic sensors.

The device has lockable casters for movement.

To move the Knowla Wall, unlock the casters, then move the device using the handle (2 people recommended). After adjusting the position, lock the casters.

### Size of the displayed image:

EPSON EB-725Wi: width 182 cm / height 113 cm (84-inch diagonal)

EPSON EB-735Fi: width 192 cm / height 108 cm (86.5-inch diagonal)

EPSON EB-760W: width 180 cm / height 112.5 cm (83.5-inch diagonal)

EPSON EB-760Wi: width 180 cm / height 112.5 cm (83.5-inch diagonal)

EPSON EB-770Fi: width 192 cm / height 108 cm (86.5-inch diagonal)

Do not cover the device's surface with any elements or anything that might distort the image. The surface should be free of posters or decals that could interfere with the device's operation. Do not use it as a whiteboard; the device is not intended for writing on with markers or other writing accessories.

## Epson Projector User Manual

Please familiarize yourself with the user manuals for the selected Epson EB series projector models.

The link to download the "User Guide" is below:



Download the EPSON projector user guide

**How to turn the device on/off?**

Connect the power cable to the device's socket (IEC C14) and the plug to a grounded electrical outlet (230V), following the safety rules from the manual and general standards. Turn on the device with the On/Off button on the projector. After starting, use it according to the manual.

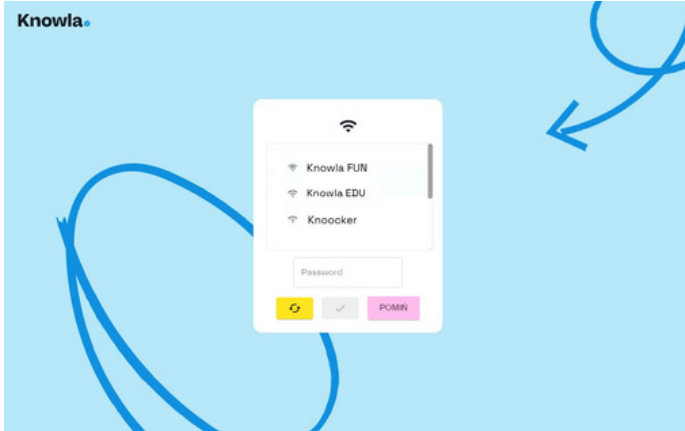


Turn off the device by double-pressing the button on the projector or the remote control (do not shut down from the Windows system).

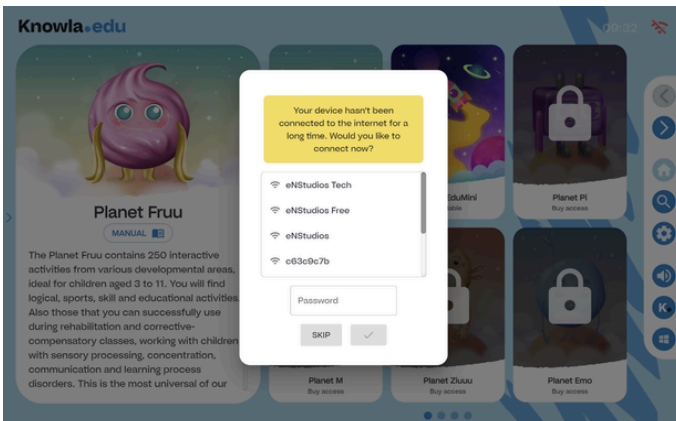


## Connecting to Wireless Internet

Connecting the device to a network on the first startup is crucial for configuration. It allows the application to update to the latest version and activate the license, which is necessary for proper operation. Without a network connection, license activation and downloading activities will not be possible. After configuration, the application works offline, but it is recommended to connect to the network at least once a month for regular updates, which eliminate errors and adapt the application to user needs. At each startup, if an update is available, the user can decide whether to update Knowla.

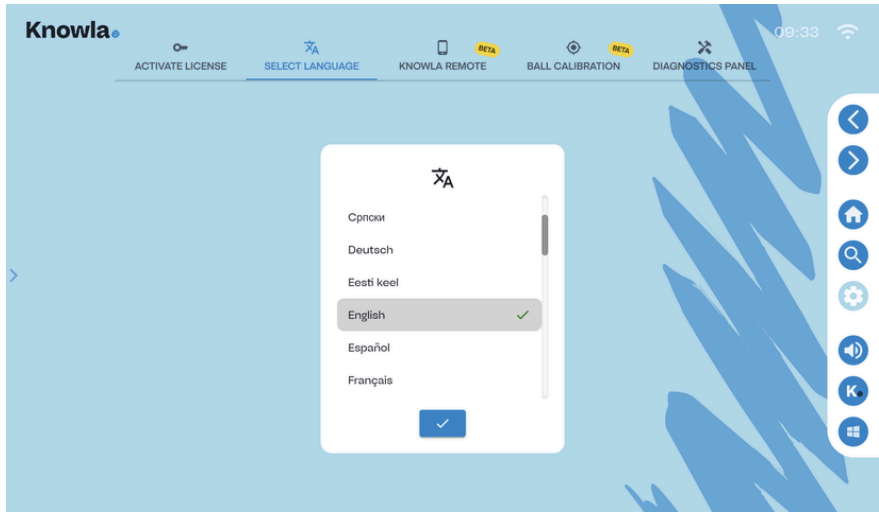


Pressing the 'Skip' button will bypass the internet connection and go to the Knowla start screen. Activity updates and license activation will not be possible. Only the Fruu Planet and EduMini activities will be available. If the device is not connected to the network, a prompt to connect will appear once a month. To connect to the network, click the "Network connection status" button.



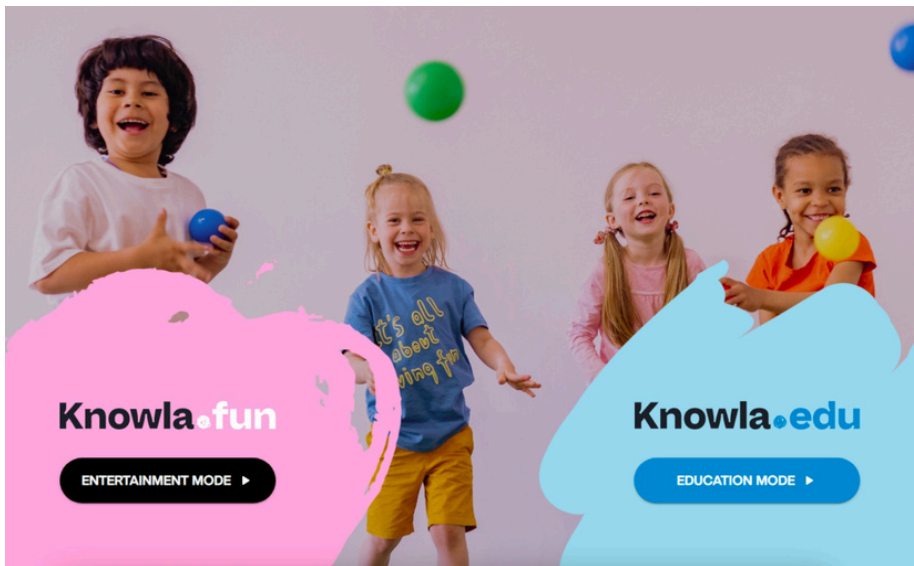
## Language Selection

You can select the application language from the drop-down list of available versions.



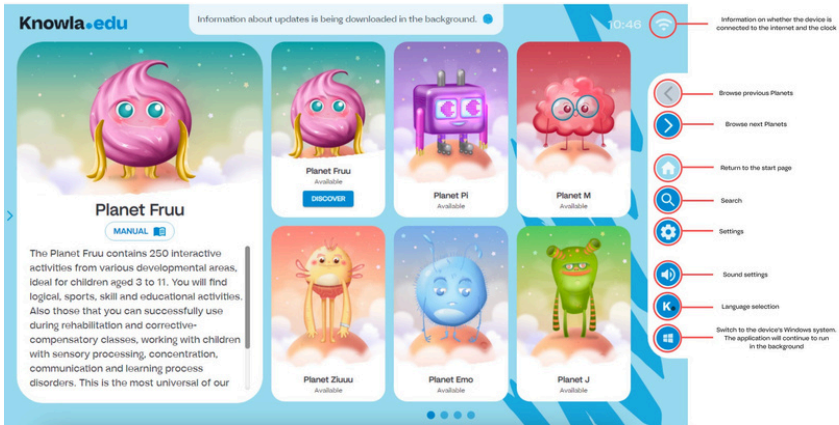
## Knowla Start Screen

After the updates have loaded, the Knowla start screen will launch. You can choose between Fun Mode and Education Mode.



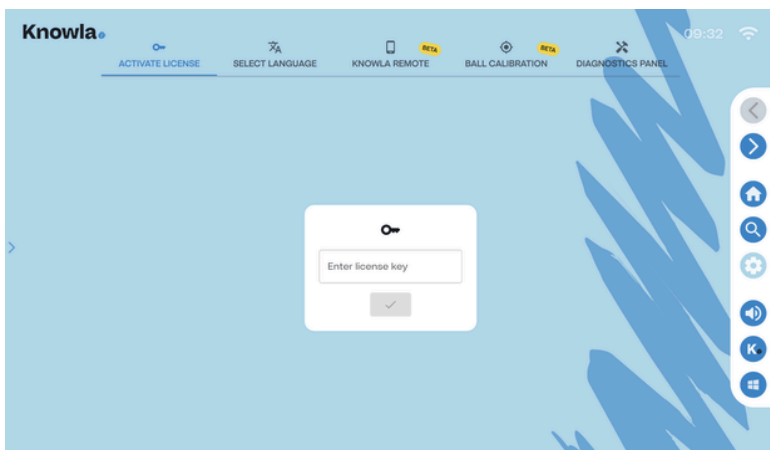
## Updates

The application will begin loading on the screen. If activity updates are available, they will start downloading and installing automatically, which may take a few minutes. An internet connection is required for updates. With each subsequent launch, a window may appear asking for permission to update the application; we recommend using the latest version.



## Settings

After clicking on the settings icon (gear), you can set the application language, calibrate the balls, use the Knowla Remote application, or activate a license key for a purchased planet.

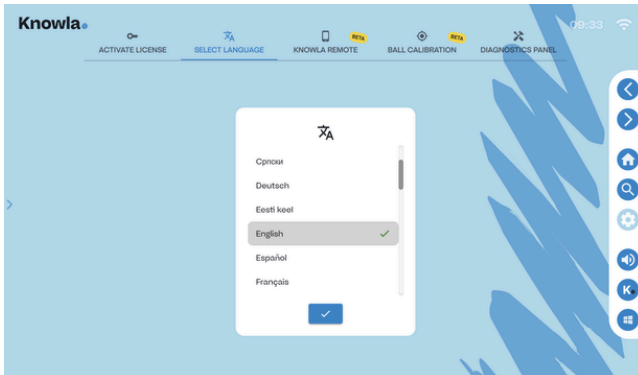


## License Key Activation

1. Start the device, making sure it is connected to the internet for the duration of the installation.
2. Prepare the pen and wireless keyboard included in the kit.
3. Wait for the Knowla application to launch.
4. Click the gear icon on the right side of the displayed image.
5. Wait a few seconds for the key activation to be confirmed. After confirmation, a message will be displayed that the planet has been unlocked.
6. Enter the key for the next planet or click the home icon to return to the start screen to use the application.
7. Enter another code in the activation window or click the home icon to return to the start screen. The Planet is ready.
8. If you have problems with the activation, contact service:

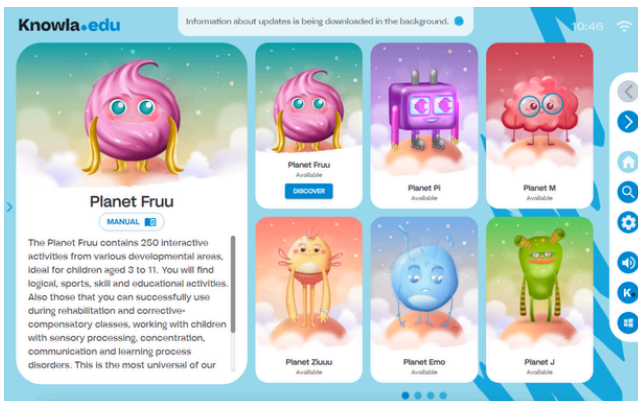
**service@knowla.eu**

**WhatsApp: +48 576 177 776 or +48 660 778 275**



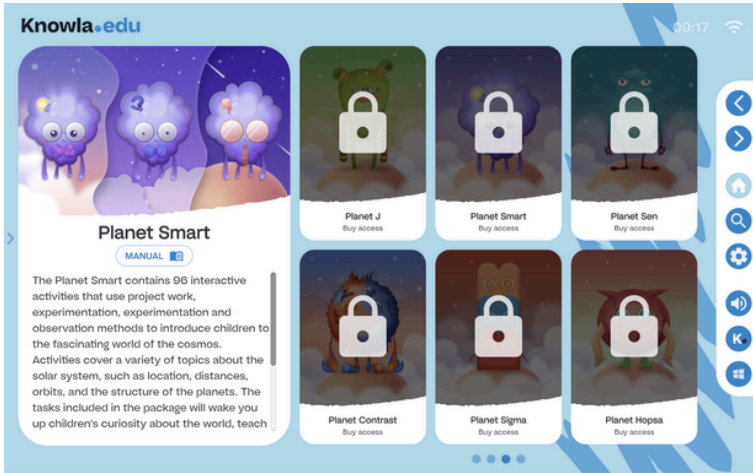
## Planets

This is a collection of activities dedicated to vertical and horizontal display and for interaction using balls and pens.



## Inactive planet

An inactive planet does not allow you to preview its activities, but it does allow you to read its description. The button redirects to a website with company contact information and a store where you can purchase it.



## Active planet

Each planet offers a unique set of applications and activities. Most buttons work as they do on the start screen. A single click on an application displays its description; a double click opens the collection of activities.



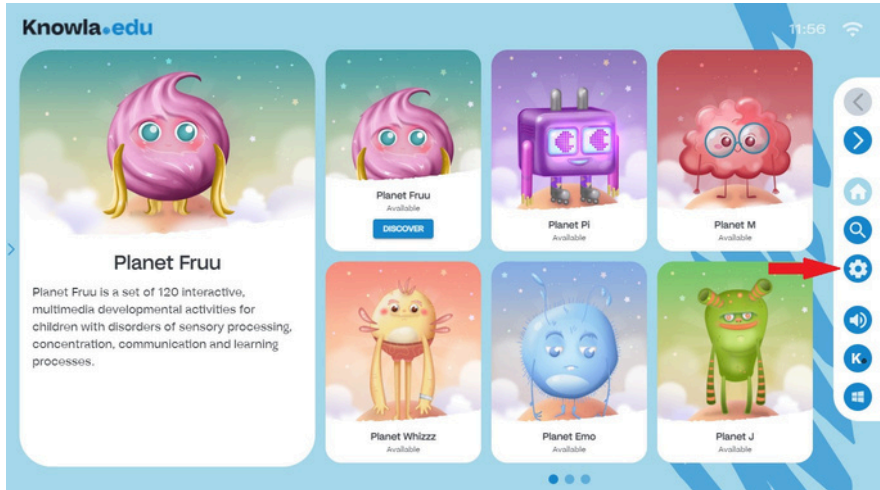
## Balls Calibration

Start the device using the remote control or the button on the projector.

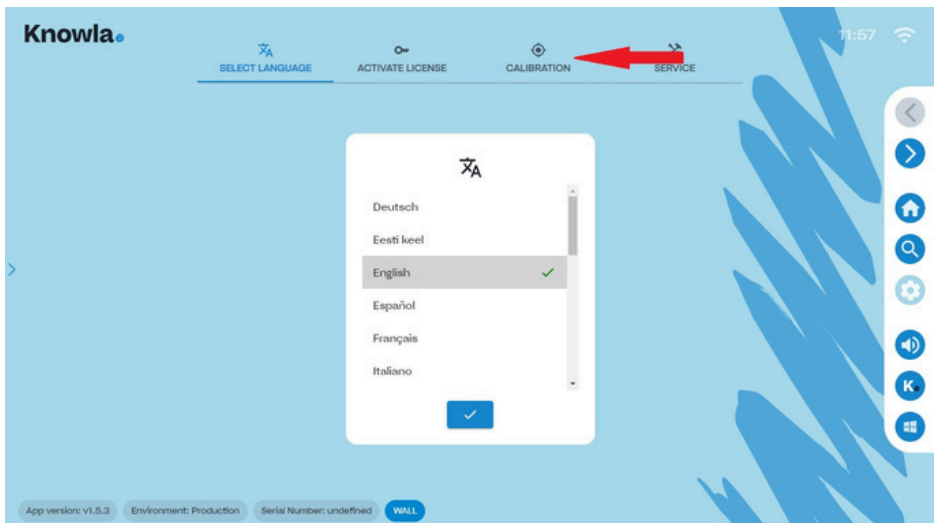
Wait until the Knowla application start screen is displayed.

Using the keyboard included in the set, click on the "gear" icon located in the panel on the right side.

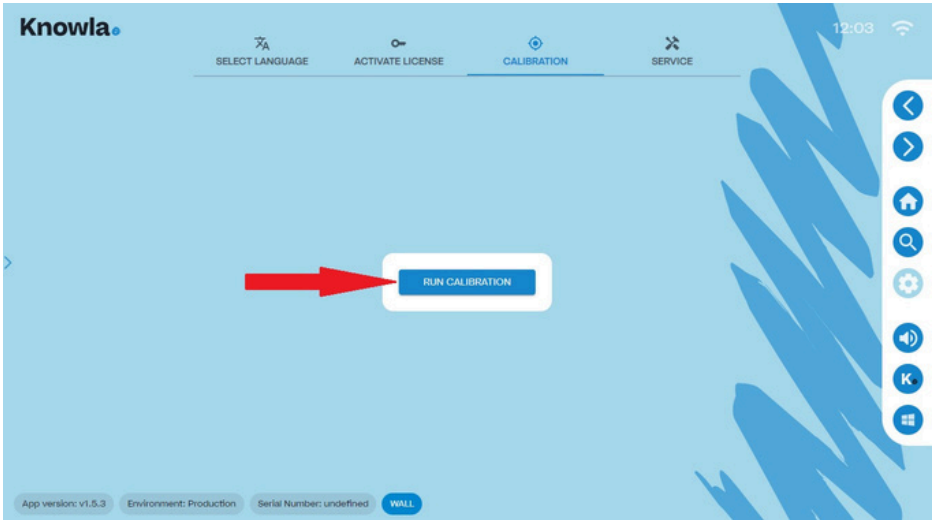
Information: On the first startup after the device is assembled, calibration will start automatically if the Knowla Wall has not been calibrated before.



If you want to initiate calibration, you must go to the "calibration" tab.



Start the device calibration by clicking the "Start Calibration" button.



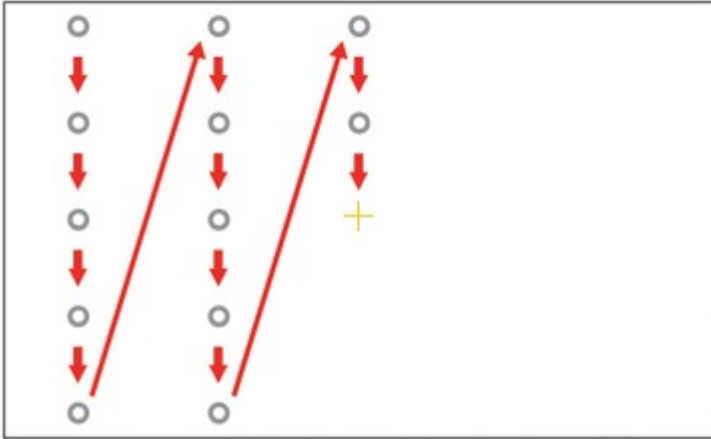
Tap twice energetically with the plastic ball included with the device at the junction of the yellow lines. (The points will change position sequentially across the entire "board").

Information: If any of the calibration points jump on their own, you must start over.

ESC button - Exit.

Recommendation: In case of difficulties with calibration—if the calibration points do not jump—the wall's setting should be changed (only for the duration of the calibration). It is recommended to set the device at an angle.





After calibration is complete, the application will automatically return to the startscreen.  
 Epson pen calibration must be performed.  
 Information: only the first time or after changes to the display area settings.

### Epson pen calibration:

Using the Epson remote control:

Menu → Pen/Touch (Enter) → Auto Calibration (Enter)

ESC button - Exit.

|                       |                              |
|-----------------------|------------------------------|
| Frequently Used Items | Pen/Touch                    |
| Image                 | Auto Calibration             |
| Signal I/O            | Manual Calibration           |
| Installation          | Touch Unit                   |
| Display               | Installation of Projectors   |
| Operation             | Pen Hovering On              |
| Management            | PC Interactivity             |
| Network               | Reset Pen/Touch Settings     |
| Pen/Touch             | Interactive                  |
| Interactive           | Drawing Function On          |
| Multi-Projection      | Display Toolbars Always Show |
| Memory                | Toolbar Color Black          |
| ECO                   | Display Drawing Area         |
| Initial/All Settings  | Mouse Icon on Toolbar Off    |
|                       | Confirm Clear Screen On      |
|                       | Pen Button Function Eraser   |
|                       | Page List Position           |
|                       | Display Clock Date & Time    |

## Starter Planets

Two starter planets are available with the device - Fruu Planet and EduMini. More about the starter planets here:



[knowla.eu/planety/planet-fruu/](https://knowla.eu/planety/planet-fruu/)



[knowla.eu/planety/planet-edumini/](https://knowla.eu/planety/planet-edumini/)

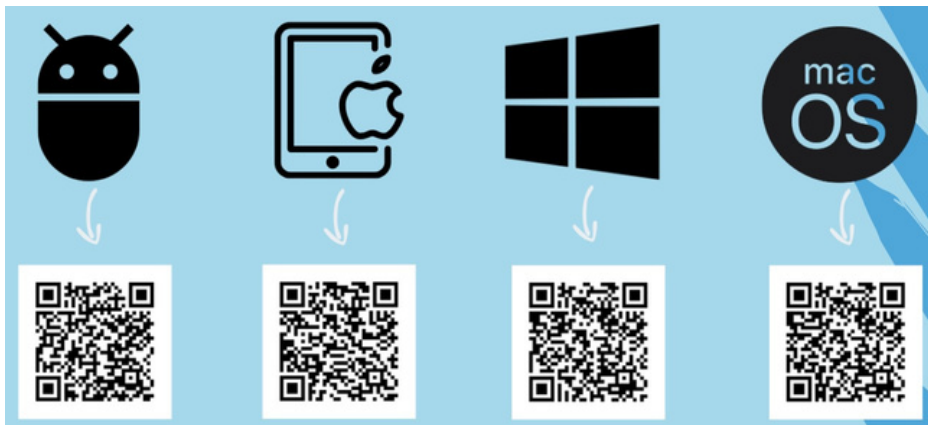
## Interaction methods

You can interact with the device using interactive pens, balls, or a keyboard with a touchpad. The device detects the movement of the interactive pen across the image and the sound of a ball hitting the displayed image. The keyboard with a touchpad works the same as in standard computers. You can use the Epson remote to set additional image display options. For the initial setup, we recommend preparing the interactive pens and the keyboard.

## Knowla Remote

Use the Knowla Remote app on your smartphone, tablet, or laptop to easily manage the device, share your screen, camera, and microphone from anywhere.

**Download the app by scanning the QR code.**

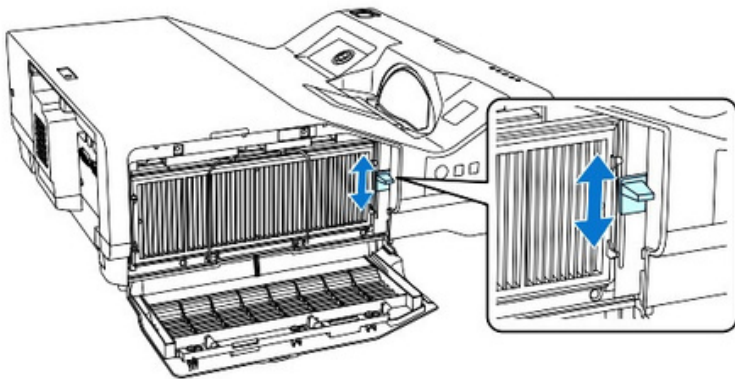


## Displayed image sharpness




To adjust the focus of the EpsonEB-760Wi projector, follow these steps:

1. Open the projector cover.
2. Find the focus adjustment lever inside the housing.
3. Gently move the lever up or down to adjust the sharpness of the displayed image.
4. Once you achieve optimal sharpness, close the projector cover.

Make sure the projector is on and an image is being displayed during adjustment.

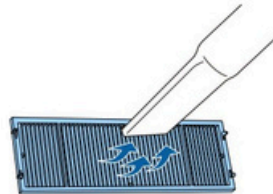
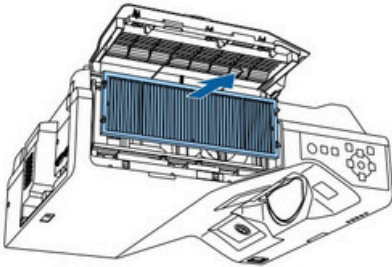
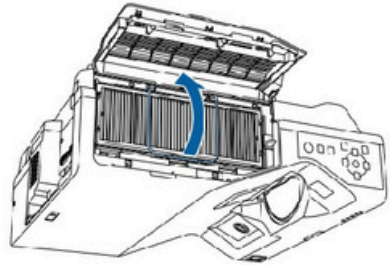
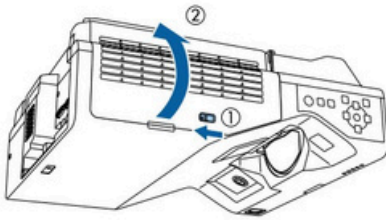


## Cleaning the device

- The perforated cover with sensors, which is the top plate during wall projection, should not be cleaned with a wet cloth.
  - The entire device should be cleaned with a soft, dry, lint-free cloth. For heavier dirt, it may be slightly damp. Do not pour liquid directly onto the device.
  - To remove dust or smudges on the sensors and lamp, gently wipe the projector's glass with a lens cleaning paper.
  - Remember to clean the projector's filter.
-  Do not clean the device with a wet cloth. This may cause damage to the device. There is a risk of electric shock.
-  Before cleaning the device, unplug it from the power outlet.
-  Do not clean the device with flammable substances. This may cause it to ignite.

## Cleaning the filter

1. Turn off the projector and unplug the power cord.
2. Slide the air filter cover latch to open the air filter cover.
3. Open the cap.
4. Pull the air filter out of the projector.
5. Vacuum the front of the air filter (the side with the tabs) to remove any remaining dust.
6. Place the air filter back in the projector.
7. Close the cap until it clicks into place.
8. Close the air filter cover.



If the dust is difficult to remove or the air filter is damaged, the air filter must be replaced.


## Proper Use


- The device may be operated by children, persons with reduced physical, sensory or mental capabilities, or persons with no experience and technological knowledge, provided that they have been supervised or instructed on how to use the device safely and understand the risks involved. The equipment should only be used with the consent and under the supervision of an adult.
- Nothing should obstruct the projector lamp while it is in operation.
- Do not use the device in a space with excessive humidity.
- Do not expose the device to adverse weather conditions (rain, snow, hail, strong wind).
- The device should not come into contact with water or other liquids.
- The device should not come into contact with fire.
- The device should not be thrown, dropped from a height, or subjected to violent impacts.
- Do not stand on the device or place heavy objects on it.
- Do not use, disconnect, or connect the device from/to the mains with wet body parts. Do not pull on the power cord. Do not dismantle the device or tamper with its components yourself, as this may be grounds for refusal of warranty repairs and may endanger your health or life. The exception is access to the projector filter and the focus slider, as described in the manual.
- Make sure that the parameters on the nameplate correspond to the rated parameters of the power source.
- All standard guidelines for the use of electronic equipment should be followed.
- Appropriate precautions and principles for securing the shipment with the device should be observed.
- The manufacturer is not responsible for damage resulting from improper securing of the shipment by the user.
- Caution and appropriate safety measures should be taken when moving the device.
- Before carrying out maintenance, disconnect the device from the mains.
- It is mandatory to read the rules for using the projector, which are contained in the projector's manual on the Epson manufacturer's website.
- The device must be connected to a grounded electrical installation.
- Make sure the device is installed correctly. A loose, damaged, or improper power cord or plug can be a source of danger and damage. If the electrical outlet is damaged, do not plug the device into it.
- The warranty period is 24 months. It does not cover mechanical damage.
- Improper use or incorrect handling of the product will void the warranty.
- A user inspection of the structure and cables must be carried out before each use. Any non-conformities shall render the device unusable, and this fact must be immediately reported to the official technical support department.
- In case of technical problems or questions, please consult the official technical support department (email: support@knowla.eu, tel.: +48 576 177 776).

- Owners of the device from abroad should contact the service via e-mail or WhatsApp, while users from Poland should use the dedicated service telephone number or e-mail communication.
- In case of any failures or mechanical damage, immediately disconnect the device from the electrical network and contact the official Knoocker support department.
- It is recommended to use a surge protector.
- It is recommended to disinfect the set components after each use.
- The responsible person should supervise the use, pay attention to the possibility of mental and physical fatigue, and pay attention to the safety of users.
- To prevent danger, do not open the device housing. Repairs or procedures concerning the device may only be carried out by qualified personnel from the appropriate official department of the manufacturer or a person authorized by the manufacturer. Warranty repairs do not include activities related to cleaning, valuation, and maintenance of the device.
- The warranty does not cover mechanical damage to the equipment, defects, and damage resulting from:
  - improper or inconsistent with the instructions for use and storage of generally accepted standards for electronic equipment,
  - improper or inconsistent with the instructions for installation of the device,
  - interference by an unauthorized service, unauthorized repairs and structural changes,
  - use of non-original or improper consumables,
  - damage resulting from external natural phenomena (weather phenomena, power surges, improper power supply, etc.)

Aworn-out device is subject to mandatory disposal in accordance with applicable regulations. After the end of its service life, the user is obliged to hand over the device to entities that collect waste electrical and electronic equipment (WEEE). The collection system, including local collection points, retail outlets, and municipal organizational units, ensures the possibility of proper equipment handover.

**Before using the device, please read the user manual carefully.**

 Warning! Possible risk to health and life due to improper use! Knoocker sp. z o.o. disclaims all liability for damages and losses resulting from improper use and failure to comply with the above warnings.

 Warning! Some people are prone to epileptic seizures or loss of consciousness after prolonged staring at flashing lights or light patterns. While looking at the screen, e.g. watching a video or playing games, they may experience symptoms of epilepsy.

People with epilepsy, neurological diseases, or other conditions sensitive to light and sound stimuli should exercise caution when using the Knowla Wall device. In case of symptoms such as dizziness, visual disturbances, tremors, fainting, disorientation, or convulsions, stop using the device and consult a doctor. The manufacturer is not responsible for health damage resulting from non-compliance with the warning. Before use, read the user manual.





**Knowla.**